



● Medium: 1-3 hours

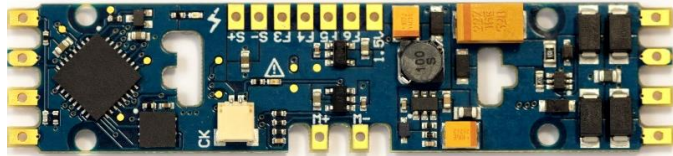
# Bachmann® GP9 (DCC-Equipped)

To add a SoundTraxx Tsunami2 Digital Sound Decoder to your non-sound GP9 model, you'll want to install a TSU-PNP EMD decoder.



Since 2006, Bachmann has provided the option of purchasing some of their models equipped with SoundTraxx sound. If you have a GP9 model without sound that you would like to upgrade, purchase SoundTraxx P.N. 885013. This board is designed to simply replace the factory PCB that supplies power to the locomotive. **This installation may take one to three hours, requires work in tight spaces, and minimal modifications to the model!**

## Tsunami2 The Sound Upgrade



SoundTraxx Sound Decoder  
SoundTraxx Speakers  
SoundTraxx Accessories

TSU-PNP, P.N. 885013	\$110.95
28mm Round Speaker, P.N. 810153	\$11.95
30-gauge Wire, Purple, P.N. 810144	\$5.95
Shrink Tube Assortment, P.N. 810037	\$9.95

**Total**  
(MSRP) **\$138.80**

### Other Tools & Supplies You Will Need

- (2) 1k-ohm Resistors
- 25-watt Soldering Iron
- Rosin Core Solder
- Wire Strippers
- Wire Cutters
- X-ACTO® Knife
- Pin Vise or Electric Drill
- #55 Miniature Drill Bit
- Miniature Screwdriver Set
- Kapton Tape
- Small Pliers
- Insulative Electrical Tape
- Heat Gun/Blow Dryer
- Dremel® Rotary Tool with Round Grinding Stone

**Notice**

SoundTraxx (Throttle Up!) shall not be liable for technical or editorial errors or omissions contained herein; nor for incidental or consequential damages resulting from the furnishing, performance or use of this material. This document contains information protected by copyright. No part of this document may be photocopied or reproduced in any form without the prior written consent of Throttle Up! Corp.