

● Easy: 1-2 hours

## Athearn® Ready To Roll® CF7

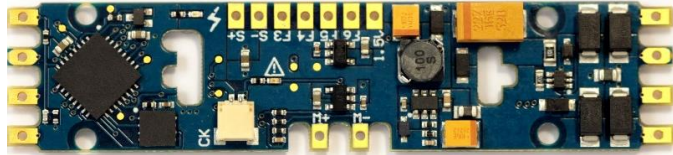
To add a SoundTraxx Tsunami2 Digital Sound Decoder to your non-sound CF7 model (announced in July 2005), you'll want to install a TSU-PNP EMD decoder.



Since 2009, Athearn has provided the option of purchasing some of their models equipped with Tsunami sound. If you have a CF7 model without sound that you would like to upgrade, purchase SoundTraxx P.N. 885013. This board is designed to simply replace the factory PCB that supplies power to the locomotive.

**You can complete the installation in one to two hours with no modification required to the model!**

## Tsunami<sup>2</sup> The Sound Upgrade



SoundTraxx Sound Decoder  
SoundTraxx Speakers  
SoundTraxx Accessories

TSU-PNP, P.N. 885013  
16 x 35mm Oval Speaker, P.N. 810113  
30-gauge Wire, Purple, P.N. 810144

\$110.95  
\$14.95  
\$5.95

**Total**  
(MSRP)

**\$131.85**

### Other Tools & Supplies You Will Need

- 0.75mm Sheet Styrene
- 25-watt Soldering Iron
- Rosin Core Solder
- Wire Strippers
- Wire Cutters
- X-ACTO® Knife
- Metal Straight Edge
- Dial Calipers
- Miniature Screwdriver Set
- Aquarium Sealant/Silicone
- Liquid Plastic Cement (TENAX-7R™ or equivalent)
- Kapton Tape
- Small Pliers

#### Notice

SoundTraxx (Throttle Up!) shall not be liable for technical or editorial errors or omissions contained herein; nor for incidental or consequential damages resulting from the furnishing, performance or use of this material. This document contains information protected by copyright. No part of this document may be photocopied or reproduced in any form without the prior written consent of Throttle Up! Corp.