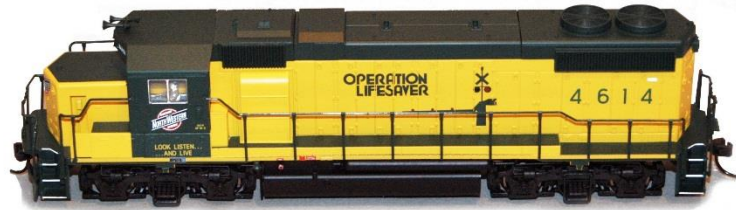


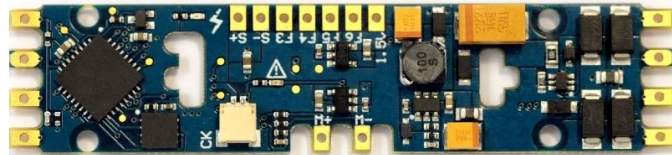
Atlas Trainman® GP38-2 (Early Release 2013 & Older)



To add a SoundTraxx Tsunami2 Digital Sound Decoder to your non-sound GP38-2 model (announced in July 2005), you'll want to install a TSU-PNP EMD decoder.

If you have a GP38-2 model without sound that you would like to upgrade, purchase SoundTraxx P.N. 885013. This board is designed to simply replace the factory PCB that supplies power to the locomotive. **This installation may take one to three hours, requires work in tight spaces, and minimal modifications required to the model.**

Tsunami2® The Sound Upgrade



SoundTraxx Sound Decoder
SoundTraxx Speakers
SoundTraxx Accessories

TSU-PNP, P.N. 885013
16 x 35mm Oval Speaker, P.N. 810113
30-gauge Wire, Purple, P.N. 810144

\$110.95
\$14.95
\$5.95

Total
(MSRP)

\$131.85

Other Tools & Supplies You Will Need

- 0.75mm Sheet Styrene
- 25-watt Soldering Iron
- Rosin Core Solder
- Wire Strippers
- Wire Cutters
- X-ACTO® Knife
- Metal Straight Edge
- Dial Calipers
- Pin Vise or Electric Drill
- #55 Miniature Drill Bit
- Miniature Screwdriver Set
- Aquarium Sealant/Silicone
- Liquid Plastic Cement (TENAX-7R™ or equivalent)
- Kapton Tape
- Small Pliers
- Miniature Saw for Plastics
- File for Plastics
- Insulative Electrical Tape
- Milling Machine/ Metal Hacksaw

Notice

SoundTraxx (Throttle Up!) shall not be liable for technical or editorial errors or omissions contained herein; nor for incidental or consequential damages resulting from the furnishing, performance or use of this material. This document contains information protected by copyright. No part of this document may be photocopied or reproduced in any form without the prior written consent of Throttle Up! Corp.