

● Easy: 1-2 hours

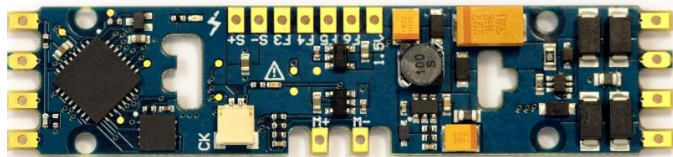
Atlas Master® MP15DC

To add a SoundTraxx Tsunami2 Digital Sound Decoder to your non-sound MP15DC model (announced in June 2005), you'll want to install a TSU-PNP EMD-2 decoder.



If you have a MP15DC model without sound that you would like to upgrade, purchase SoundTraxx P.N. 885024. This board is designed to simply replace the factory PCB that supplies power to the locomotive. **You can complete this installation in one to two hours with no modification required to the model!**

Tsunami2™ The Sound Upgrade



SoundTraxx Sound Decoder
SoundTraxx Speakers
SoundTraxx Accessories

TSU-PNP, P.N. 885024 \$110.95
14 x 25mm Oval Speaker, P.N. 810112 \$14.95
30-gauge Wire, Purple, P.N. 810144 \$4.95
Shrink Tube Assortment, P.N. 810037 \$9.95

Total
(MSRP) **\$140.80**

Other Tools & Supplies You Will Need

- 1.00 x 3.20mm Strip Styrene
- (2) 1k-ohm Resistors
- 25-watt Soldering Iron
- Rosin Core Solder
- Wire Strippers
- Wire Cutters
- X-ACTO® Knife
- Metal Straight Edge
- Dial Calipers
- Miniature Screwdriver Set
- Aquarium Sealant/Silicone
- Liquid Plastic Cement (TENAX-7R™ or equivalent)
- Kapton Tape
- Small Pliers
- File for Plastics

Notice

SoundTraxx (Throttle Up!) shall not be liable for technical or editorial errors or omissions contained herein; nor for incidental or consequential damages resulting from the furnishing, performance or use of this material. This document contains information protected by copyright. No part of this document may be photocopied or reproduced in any form without the prior written consent of Throttle Up! Corp.